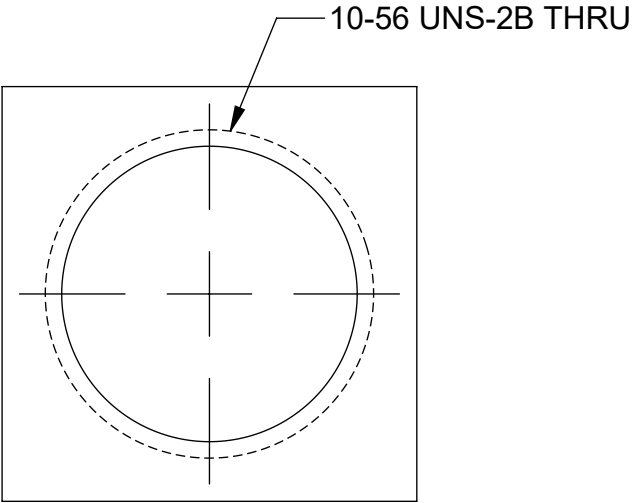
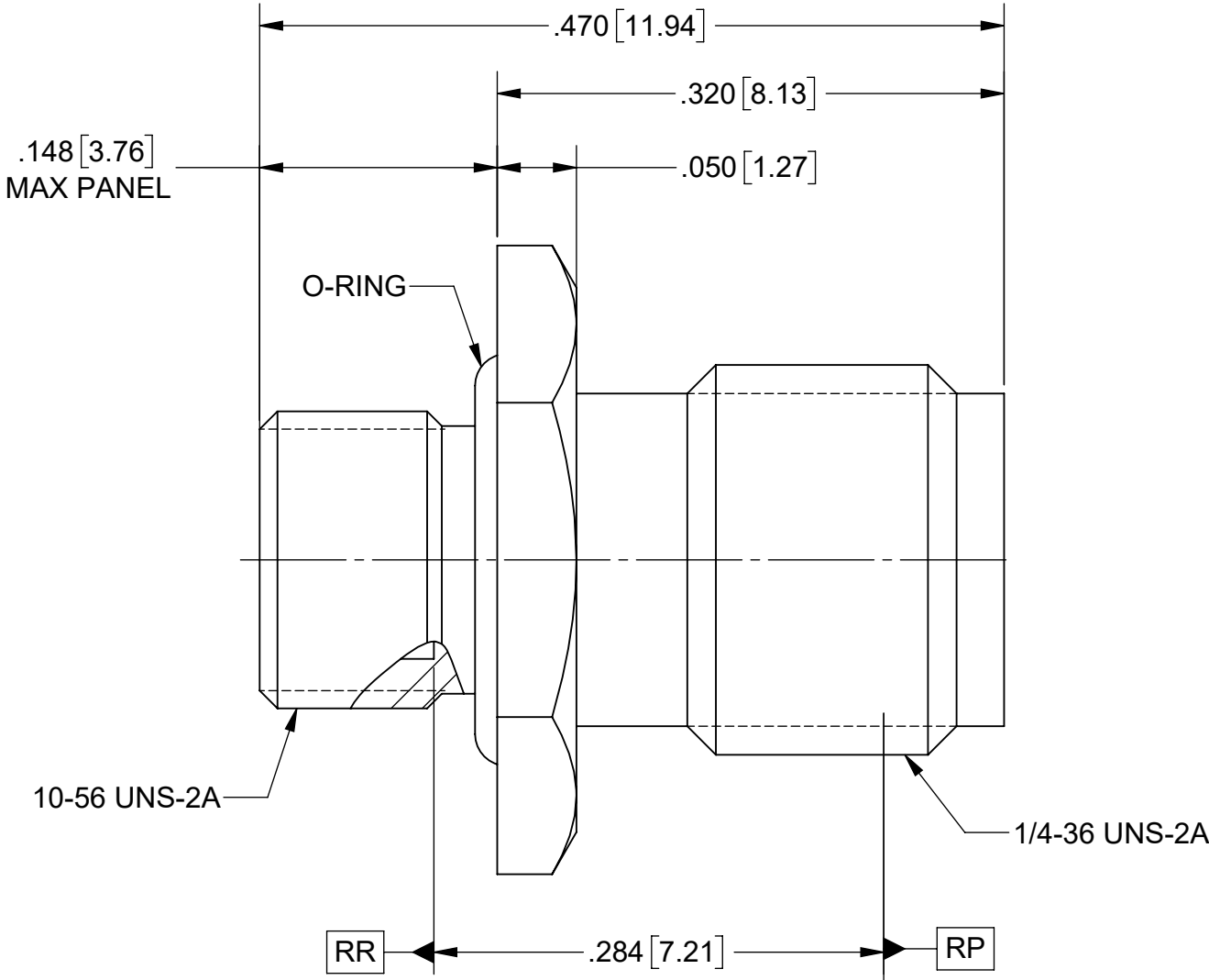
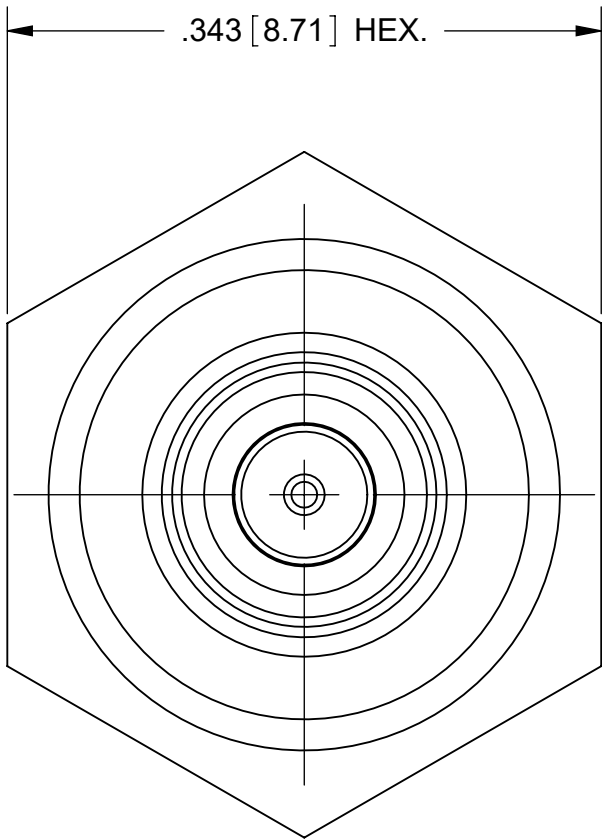
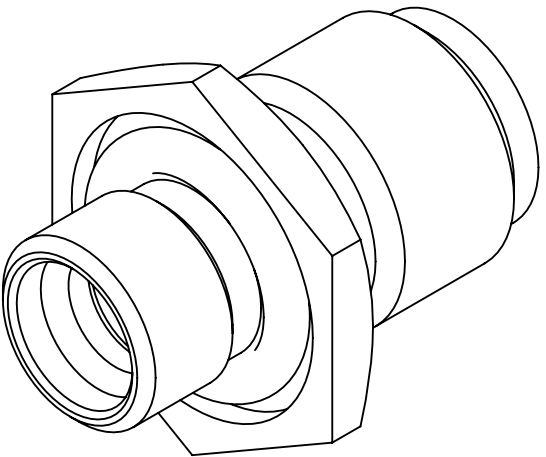


PRODUCT DATA DRAWING

REVISION HISTORY			
REV	DESCRIPTION	DATE	APPROVED
A	DCN 55884	12/24	SEE PDM



RECOMMENDED MOUNTING HOLE



- MATERIAL:

BODY:

CONTACT:

INSULATOR:

GLASS:

PIN:

O-RING:
- STAINLESS STEEL PER AMS 5640, ALLOY UNS S30300, TYPE 1 OR ASTM A582, TYPE 303, CONDITION A.

BERYLLIUM COPPER PER ASTM B196, ALLOY No. UNS C17300, TD04.

PTFE PER ASTM D1710, TYPE I, GRADE 1, CLASS B.

CORNING 7070 OR EQUIVALENT.

KOVAR PER ASTM F15.

SILICONE RUBBER PER A-A-59588, CLASS 2B, GRADE 60 OR 70.

- FINISH:

BODY, PIN & CONTACT:
- GOLD PER ASTM B488, TYPE II, CODE C, CLASS 1.27 OVER NICKEL PER AMS-QQ-N-290, CLASS 1, .00005" MIN.

- PERFORMANCE:


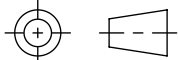
IMPEDANCE:

FREQ. RANGE:

HERMETICITY:
- 50 OHMS

DC TO 18.0 GHz

1 X 10-8.

MATERIAL:	SEE NOTES	DIMENSIONS ARE IN INCHES TOLERANCES:		UNLESS OTHERWISE SPECIFIED		<div> www.svmicrowave.com</div> <div>TITLE: ADAPTER SMA FEM TO SMP FD MALE BLKHD MT HERMETICALLY SEALED</div>	
FINISH:	SEE NOTES	FRACTIONAL: ± 1/64 ANGULAR: X° ± 1°0' X°X' ± 15'		1) ALL DIMENSIONS ARE IN INCHES (MILLIMETERS) 2) ALL DIMENSIONS ARE AFTER PLATING. 3) BREAK CORNERS & EDGES .005 R. MAX. 4) CHAM. 1ST & LAST THREADS. 5) SURFACE ROUGHNESS 63-MIL-STD-10. 6) DIA.'S ON COMMON CENTERS TO BE CONCENTRIC WITHIN .005 T.I.R. 7) REMOVE ALL BURRS			
SURFACE AREA:	N/A	DECIMAL: .X ± .030 .XX ± .010 .XXX ± .005		INTERPRET DIMENSIONS AND TOLERANCES PER ASME Y14.5M - 1994		SIZE DWG. NO.	
PROPRIETARY		THIRD ANGLE PROJECTION		DRAWN: JMC 09/18/18		SF1112-6162	
THE INFORMATION CONTAINED IN THIS DRAWING IS THE SOLE PROPERTY OF SV MICROWAVE, INC. ANY REPRODUCTION IN PART OR AS A WHOLE WITHOUT THE WRITTEN PERMISSION OF SV MICROWAVE, INC IS PROHIBITED.				CHECKED: SEE PDM		SCALE: 9:1	
				APPROVED: SEE PDM			
						SHEET 1 OF 1	