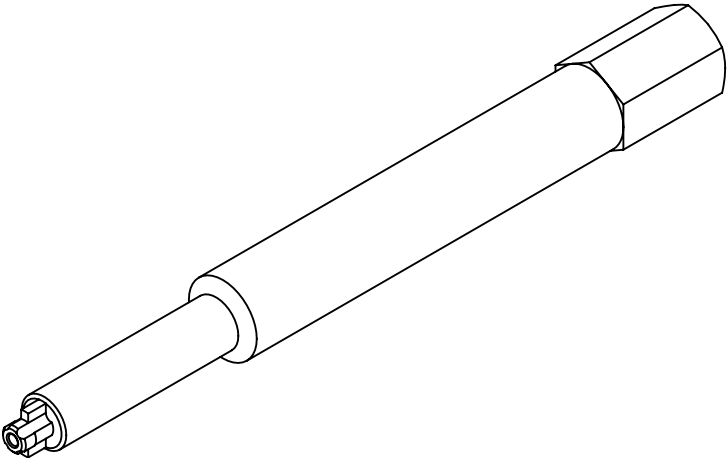
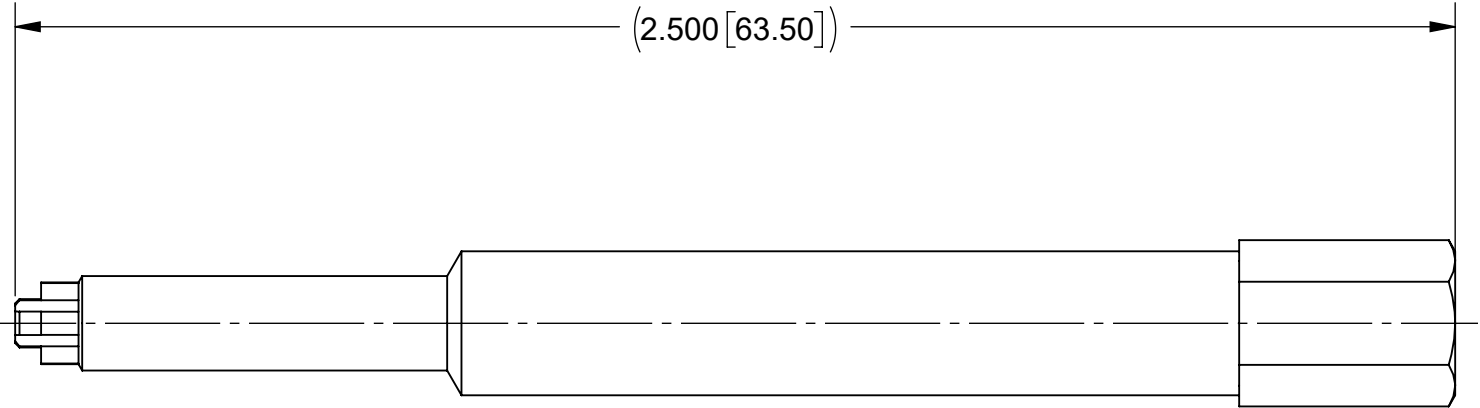
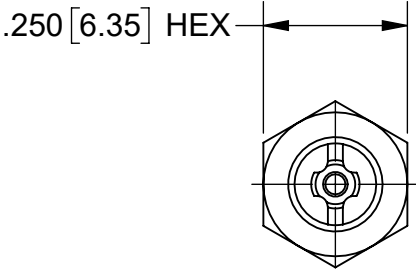


PRODUCT DATA DRAWING

| REVISION HISTORY | | | |
|------------------|----------------|----------|----------|
| REV | DESCRIPTION | DATE | APPROVED |
| A | REV. DCN 52855 | 08/17/23 | STW |
| | | | |
| | | | |



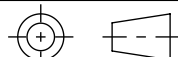
MATERIAL:

HEX SHAFT: STAINLESS STEEL PER ASTM A564, ALLOY UNS S17400, TYPE 630, CONDITION A.

FINISH:

HEX SHAFT: NICKEL PER SAE AMS 2404, CLASS 1.

INSTALLATION TORQUE: 4 TO 6 IN-LBS.
FOR USE WITH SV P/N 3211-20017 OR SIMILAR.

| | | | | | | | | | |
|--|-----------|---|--|---|--|---|--|--------------|--|
| MATERIAL: | SEE NOTES | DIMENSIONS ARE IN INCHES TOLERANCES: FRACTIONAL: $\pm 1/64$ ANGULAR: X° $\pm 1^{\circ}0'$ X°X' $\pm 15'$ DECIMAL: .X $\pm .030$.XX $\pm .010$.XXX $\pm .005$ INTERPRET DIMENSIONS AND TOLERANCES PER ASME Y14.5M - 1994 | | UNLESS OTHERWISE SPECIFIED 1) ALL DIMENSIONS ARE IN INCHES (MILLIMETERS) 2) ALL DIMENSIONS ARE AFTER PLATING. 3) BREAK CORNERS & EDGES .005 R. MAX. 4) CHAM. 1ST & LAST THREADS. 5) SURFACE ROUGHNESS 63-MIL-STD-10. 6) DIA.'S ON COMMON CENTERS TO BE CONCENTRIC WITHIN .005 T.I.R. 7) REMOVE ALL BURRS | | SV Microwave, Inc. 2400 Centrepark West Drive, Suite 100 West Palm Beach, FL 33409 | | | |
| FINISH: | SEE NOTES | | | | | TITLE: SMPM SB MALE SHROUD DRIVER | | | |
| SURFACE AREA: | N/A | | | | | SIZE B DWG. NO. 500-32-009 | | | |
| PROPRIETARY THE INFORMATION CONTAINED IN THIS DRAWING IS THE SOLE PROPERTY OF SV MICROWAVE, INC. ANY REPRODUCTION IN PART OR AS A WHOLE WITHOUT THE WRITTEN PERMISSION OF SV MICROWAVE, INC IS PROHIBITED. | | THIRD ANGLE PROJECTION  | | DRAWN: FED 03/01/11 | | SCALE: 3:1 | | SHEET 1 OF 1 | |
| | | | | CHECKED: STW 03/01/11 | | | | | |
| | | | | APPROVED: STW 03/01/11 | | | | | |