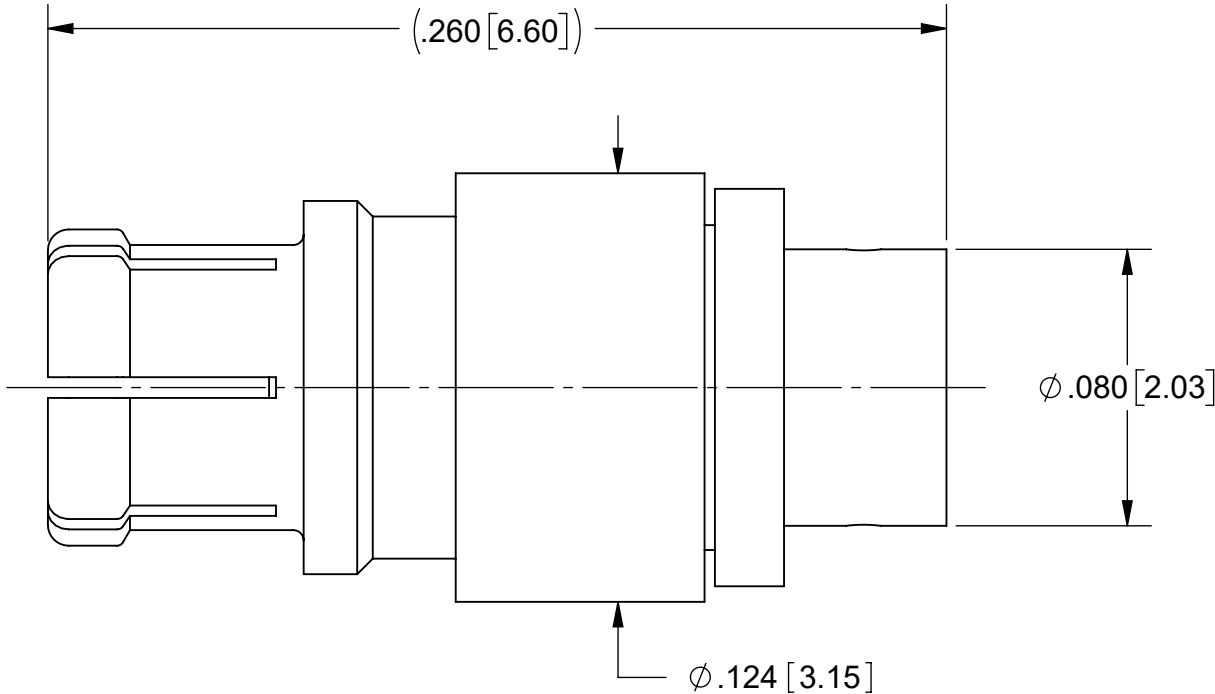
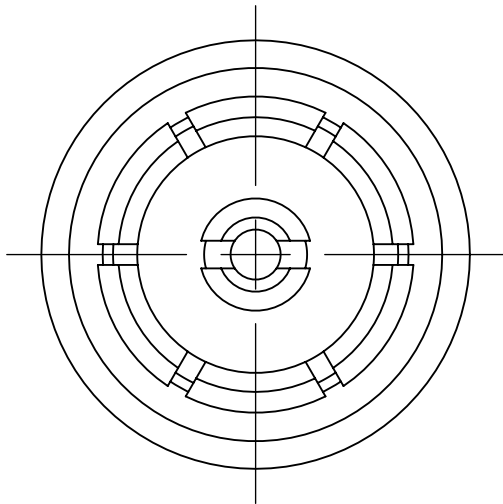


PRODUCT DATA DRAWING

REVISION HISTORY			
REV	DESCRIPTION	DATE	APPROVED
-	NRN 44863	05/20	SEE PDM
A	DCN 52177	02/23	



MATERIAL:

BODY, FERRULE
& CONTACT: BERYLLIUM COPPER


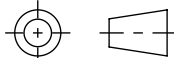
INSULATOR: PTFE

FINISH:

BODY, CONTACT
& FERRULE: GOLD OVER COPPER

PERFORMANCE:

IMPEDANCE: 50 OHMS
FREQ. RANGE: DC TO 40.0 GHz.
MAGNETIC FIELD
STRENGTH: <.1 mG

MATERIAL:	SEE NOTES	DIMENSIONS ARE IN INCHES TOLERANCES: FRACTIONAL: $\pm 1/64$ ANGULAR: X° $\pm 1^{\circ}0'$ X°X' $\pm 15'$ DECIMAL: .X $\pm .030$.XX $\pm .010$.XXX $\pm .005$ INTERPRET DIMENSIONS AND TOLERANCES PER ASME Y14.5M - 1994	UNLESS OTHERWISE SPECIFIED 1) ALL DIMENSIONS ARE IN INCHES (MILLIMETERS) 2) ALL DIMENSIONS ARE AFTER PLATING. 3) BREAK CORNERS & EDGES .005 R. MAX. 4) CHAM. 1ST & LAST THREADS. 5) SURFACE ROUGHNESS 63-MIL-STD-10. 6) DIA.'S ON COMMON CENTERS TO BE CONCENTRIC WITHIN .005 T.I.R. 7) REMOVE ALL BURRS	<div> www.svmicrowave.com</div> <div>TITLE: SMPM JACK (NON-MAGNETIC) FOR .047 CABLE</div>			
FINISH:	SEE NOTES						
SURFACE AREA:	N/A	THIRD ANGLE PROJECTION 	DRAWN:	SJ 05/27/20		SIZE B	DWG. NO. 3221-40131
THE INFORMATION CONTAINED IN THIS DRAWING IS THE SOLE PROPERTY OF SV MICROWAVE, INC. ANY REPRODUCTION IN PART OR AS A WHOLE WITHOUT THE WRITTEN PERMISSION OF SV MICROWAVE, INC IS PROHIBITED.			CHECKED:	SEE PDM			
		APPROVED:	SEE PDM		SCALE: 18:1	SHEET 1 OF 1	