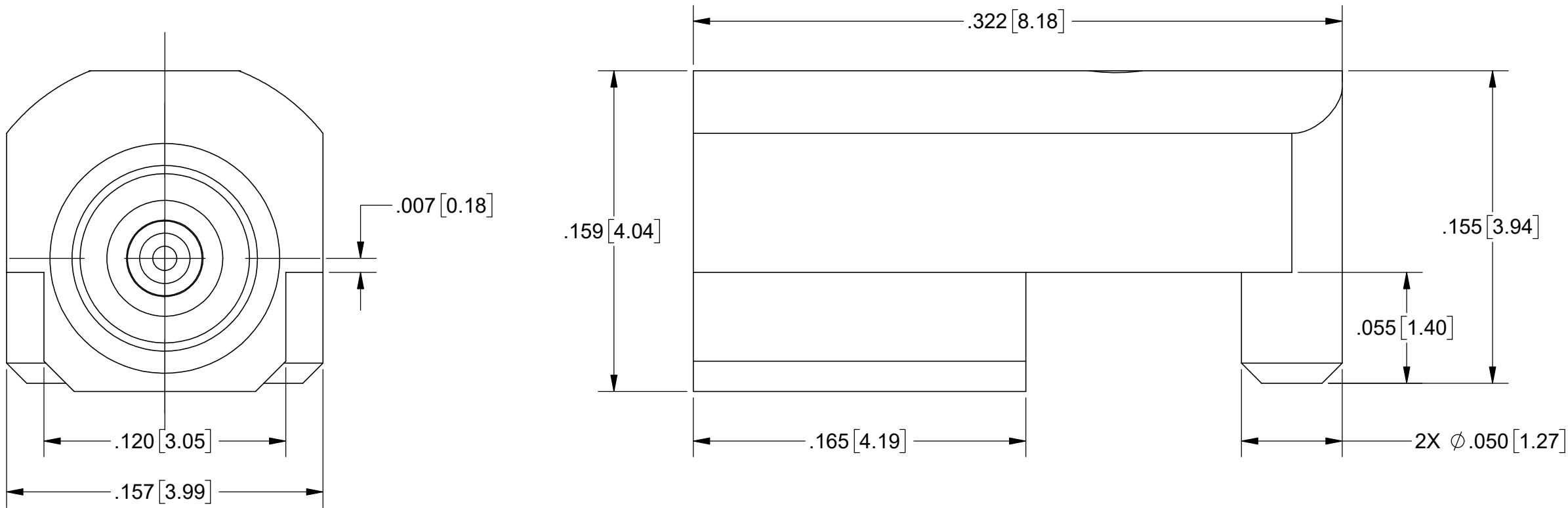


PRODUCT DATA DRAWING

REVISION HISTORY			
REV	DESCRIPTION	DATE	APPROVED
A	DCN 56576	03/25	SEE PDM



MATERIAL:

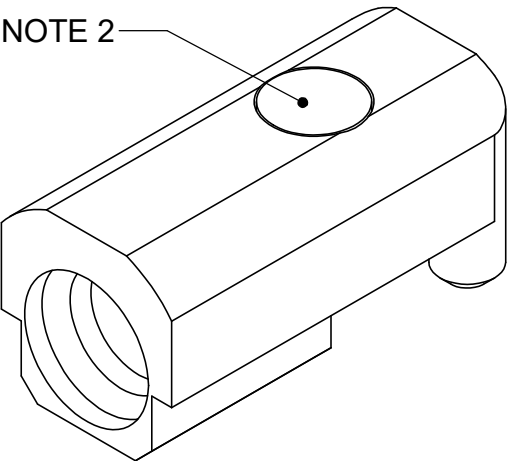
BODY:	STAINLESS STEEL PER AMS-5640, ALLOY UNS S30300, TYPE 1
CONTACT & CAP	BERYLLIUM COPPER PER ASTM B196, ALLOY No. UNS C17300, TD04
INSULATOR:	PTFE PER ASTM D1710, TYPE I, GRADE 1, CLASS B

FINISH:

BODY,CONTACT & CAP :	GOLD PER ASTM B488, TYPE II, CODE C, CLASS 1.27, OVER NICKEL PER AMS-QQ-N-290, CLASS 1, .00005" MIN.
----------------------	------------------------------------------------------------------------------------------------------


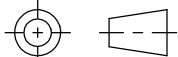
PERFORMANCE:

IMPEDANCE:	50 OHMS
FREQ. RANGE:	DC TO 40.0 GHZ



NOTES

- 1. FOR OPTIMAL CROSSTALK AND ISOLATION, SV MUST BE CONSULTED FOR PCB SPECIFICATIONS.
- 2. CAP TO BE INSTALLED AFTER REFLOW AND SOLDER JOINT INSPECTION.

MATERIAL:	SEE NOTES	DIMENSIONS ARE IN INCHES TOLERANCES:		UNLESS OTHERWISE SPECIFIED		<div> www.svmicrowave.com</div>		
FINISH:	SEE NOTES	FRACTIONAL: ±1/64    ANGULAR: X° ±1°0'    X°X' ±15'		1) ALL DIMENSIONS ARE IN INCHES [MILLIMETERS] 2) ALL DIMENSIONS ARE AFTER PLATING. 3) BREAK CORNERS & EDGES .005 R. MAX. 4) CHAM. 1ST & LAST THREADS. 5) SURFACE ROUGHNESS 63-MIL-STD-10. 6) DIA. 'S ON COMMON CENTERS TO BE CONCENTRIC WITHIN .002 T.I.R. 7) REMOVE ALL BURRS		TITLE:  SINGLE PORT SMPM MALE PCB EDGE MOUNT		
SURFACE AREA:	N/A	DECIMAL: .X    ±.030 XX    ±.010 XXX ±.005		INTERPRET DIMENSIONS AND TOLERANCES PER ASME Y14.5M - 1994		SIZE DWG. NO. B 3211-60468-60469		
PROPRIETARY		THIRD ANGLE PROJECTION		DRAWN: VNR 01/27/25		SCALE: 16:1		
THE INFORMATION CONTAINED IN THIS DRAWING IS THE SOLE PROPERTY OF SV MICROWAVE, INC. ANY REPRODUCTION IN PART OR AS A WHOLE WITHOUT THE WRITTEN PERMISSION OF SV MICROWAVE, INC IS PROHIBITED.				CHECKED: SEE PDM		SHEET 1 OF 1		
				APPROVED: SEE PDM				