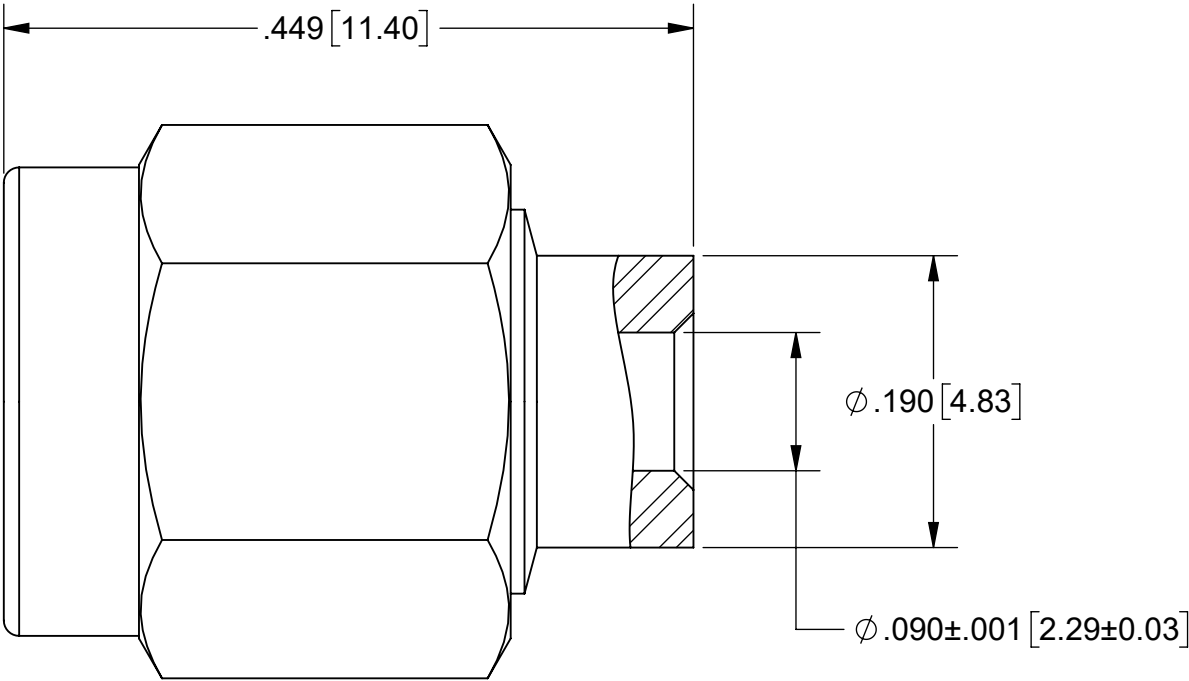
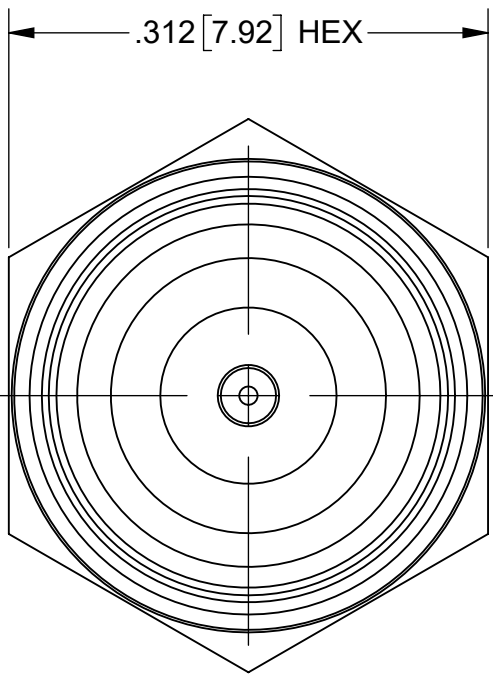


PRODUCT DATA DRAWING

REVISION HISTORY			
REV	DESCRIPTION	DATE	APPROVED
-	NRN 44866	05/20	SEE PDM
A	DCN 50346	11/20	
B	DCN 52177	02/23	



MATERIAL:

BODY, CONTACT& COUPLING NUT: BERYLLIUM COPPER PER ASTM B196, ALLOY No. UNS C17300, TD04.

LOCK RING: BERYLLIUM COPPER PER ASTM B194, B196 OR B197, ALLOY No. UNS C17200 OR C17300.

INSULATOR: PTFE PER ASTM D1710, TYPE I, GRADE 1, CLASS B.

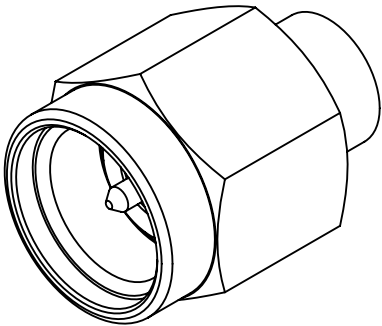
GASKET: SILICONE RUBBER PER A-A-59588, CLASS 2B, GRADE 60/70.


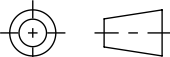
FINISH:

BODY, CONTACT & COUPLING GOLD PER ASTM B488, TYPE I, GRADE C, CLASS .51 OVER COPPER PER MIL-C-14550, CLASS 4, .00005" MIN.

PERFORMANCE:

IMPEDANCE: 50 OHMS
FREQ. RANGE: DC TO 18.0 GHz.
MAGNETIC FIELD STRENGTH: <.1 mG



MATERIAL:	SEE NOTES	DIMENSIONS ARE IN INCHES TOLERANCES:		UNLESS OTHERWISE SPECIFIED		 www.svmicrowave.com	
FINISH:	SEE NOTES	FRACTIONAL: ±1/64 ANGULAR: X° ±1°0' X°X' ±15'		1) ALL DIMENSIONS ARE IN INCHES (MILLIMETERS) 2) ALL DIMENSIONS ARE AFTER PLATING. 3) BREAK CORNERS & EDGES .005 R. MAX. 4) CHAM. 1ST & LAST THREADS. 5) SURFACE ROUGHNESS 63-MIL-STD-10. 6) DIA.'S ON COMMON CENTERS TO BE CONCENTRIC WITHIN .005 T.I.R. 7) REMOVE ALL BURRS		TITLE:	
SURFACE AREA:	N/A	DECIMAL: .X ±.030 .XX ±.010 .XXX ±.005				SMA PLUG (NON-MAGNETIC) FOR .085 CABLE	
PROPRIETARY		INTERPRET DIMENSIONS AND TOLERANCES PER ASME Y14.5M - 1994				SIZE DWG. NO.	
THE INFORMATION CONTAINED IN THIS DRAWING IS THE SOLE PROPERTY OF SV MICROWAVE, INC. ANY REPRODUCTION IN PART OR AS A WHOLE WITHOUT THE WRITTEN PERMISSION OF SV MICROWAVE, INC IS PROHIBITED.		THIRD ANGLE PROJECTION		DRAWN: KRR 05/27/20		2911-40024	
				CHECKED: SEE PDM		SCALE: 8:1	
				APPROVED: SEE PDM			
						SHEET 1 OF 1	