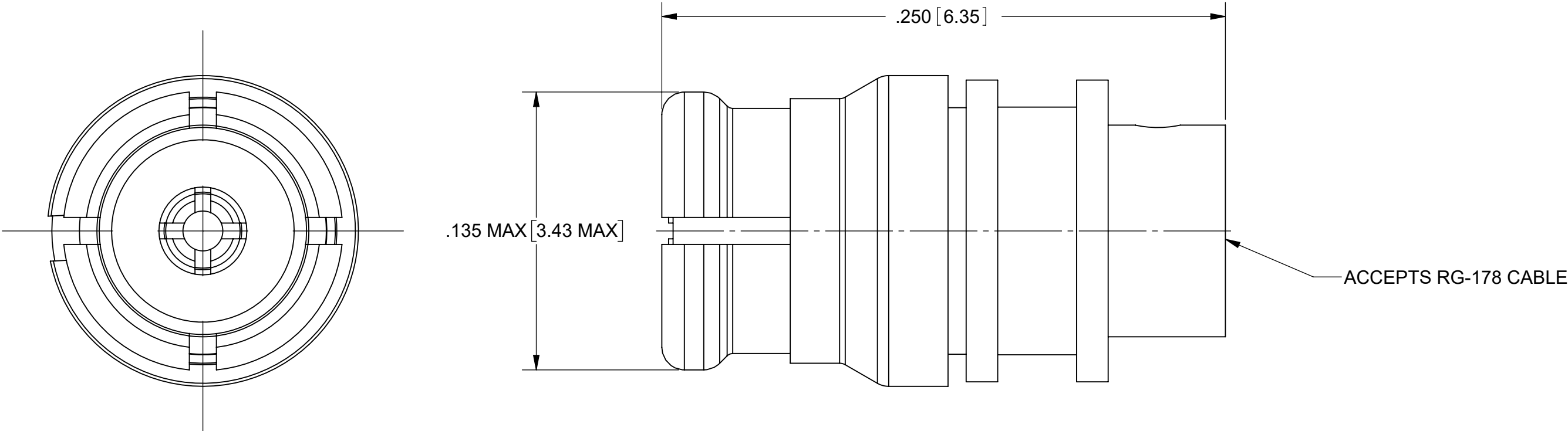


PRODUCT DATA DRAWING

REVISION HISTORY			
REV	DESCRIPTION	DATE	APPROVED
A	DCN 57095	05/25	SEE PDM



MATERIAL:

BODY, CONTACT
ANTI-ROCK RING

BERYLLIUM COPPER PER ASTM B196,
ALLOY No. UNS C17300, TD04

INSULATOR:

PTFE PER ASTM D1710, TYPE I, GRADE 1, CLASS B

DIELECTRIC STOP:

TORLON.

FINISH:

BODY, CONTACT
ANTI-ROCK RING:

GOLD PER ASTM B 488, TYPE II,
CODE C, CLASS 1.27; OVER NICKEL
PER AMS-QQ-N-290, CLASS 1, .00005" MIN.

PERFORMANCE:

IMPEDANCE:

50 OHMS

FREQ. RANGE:

DC TO 4.0 GHz

VSWR:

1.15:1 DC TO 4.0 GHz

INSERTION LOSS:

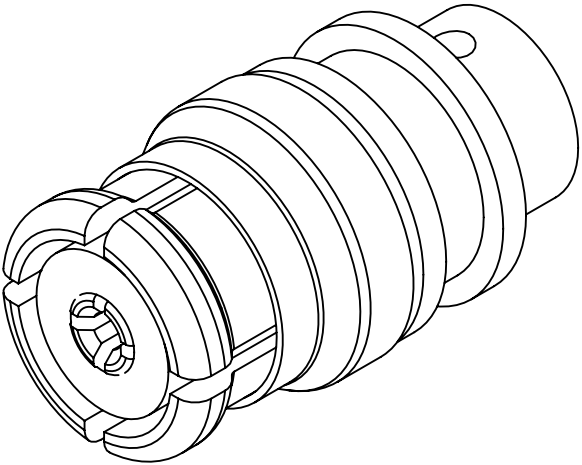
.12 X SQRT(F(F IN GHz))


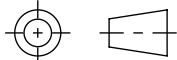
DWV:

500 VRMS

OPERATING TEMP.:

-55°C TO +165°C



MATERIAL:	SEE NOTES	DIMENSIONS ARE IN INCHES TOLERANCES:		UNLESS OTHERWISE SPECIFIED		<div> www.svmicrowave.com</div>	
FINISH:	SEE NOTES	FRACTIONAL: $\pm 1/64$ ANGULAR: X° $\pm 1^{\circ}0'$ X°X' $\pm 15'$		DECIMAL: .X $\pm .030$.XX $\pm .010$.XXX $\pm .005$			
SURFACE AREA:	N/A	INTERPRET DIMENSIONS AND TOLERANCES PER ASME Y14.5M - 1994		1) ALL DIMENSIONS ARE IN INCHES (MILLIMETERS) 2) ALL DIMENSIONS ARE AFTER PLATING. 3) BREAK CORNERS & EDGES .005 R. MAX. 4) CHAM. 1ST & LAST THREADS. 5) SURFACE ROUGHNESS 63-MIL-STD-10. 6) DIA.'S ON COMMON CENTERS TO BE CONCENTRIC WITHIN .005 T.I.R. 7) REMOVE ALL BURRS		TITLE:	
PROPRIETARY		THIRD ANGLE PROJECTION		DRAWN: HLP 12/06/07		SMP STRAIGHT JACK FOR RG178 CABLE	
THE INFORMATION CONTAINED IN THIS DRAWING IS THE SOLE PROPERTY OF SV MICROWAVE, INC. ANY REPRODUCTION IN PART OR AS A WHOLE WITHOUT THE WRITTEN PERMISSION OF SV MICROWAVE, INC IS PROHIBITED.				CHECKED: SEE PDM		SIZE B	DWG. NO. 1221-4004
				APPROVED: SEE PDM		SCALE: 20:1	
						SHEET 1 OF 1	