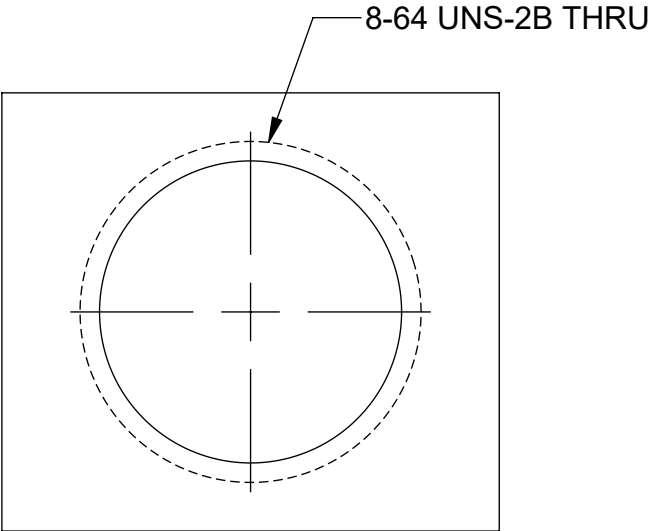
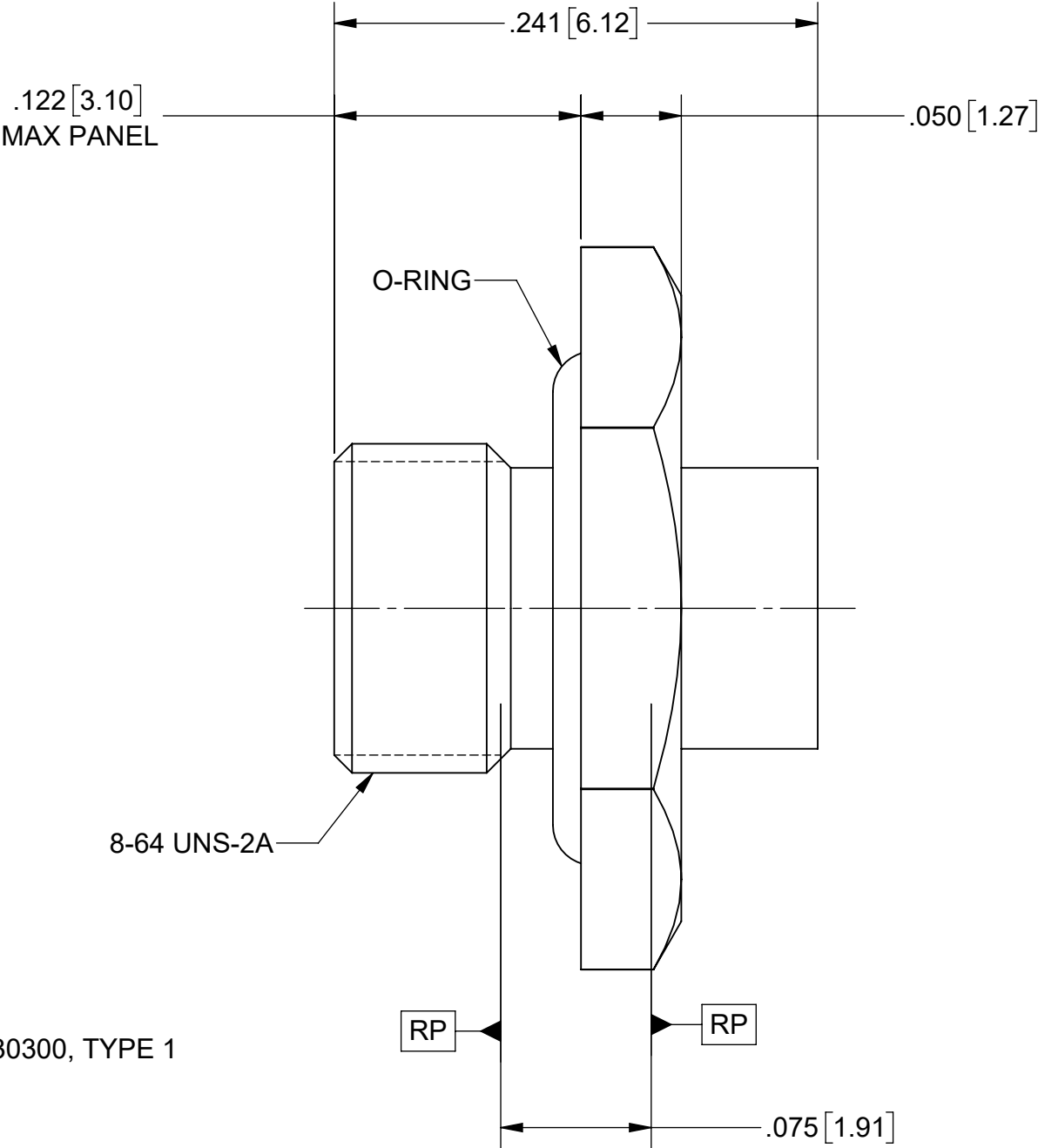
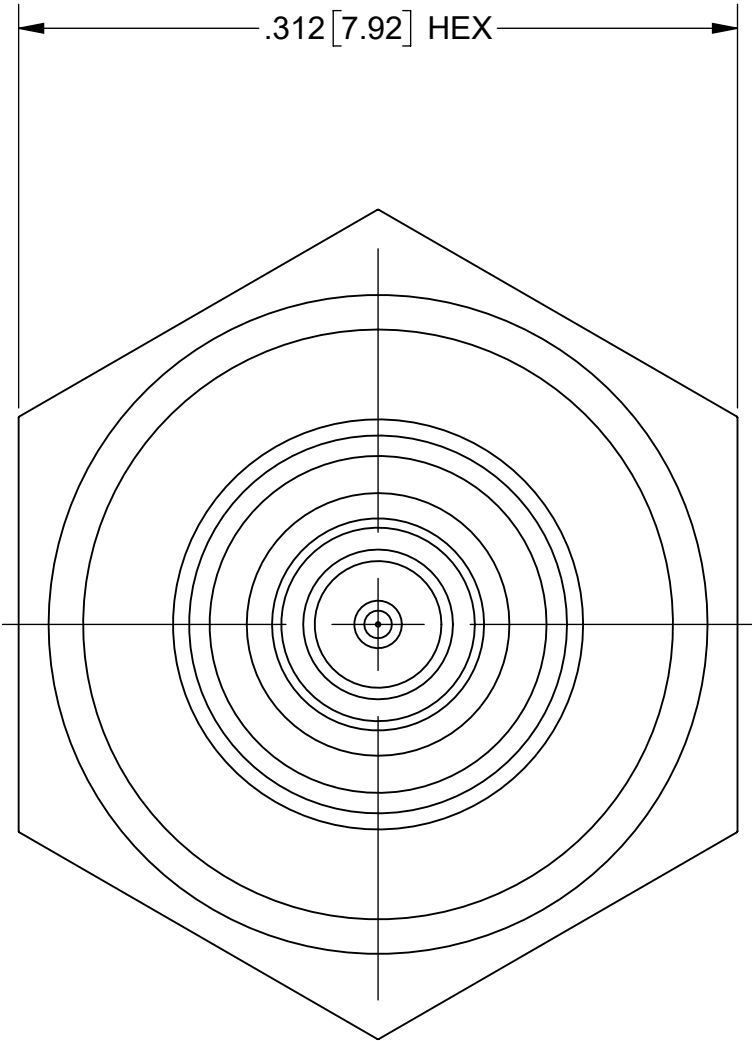
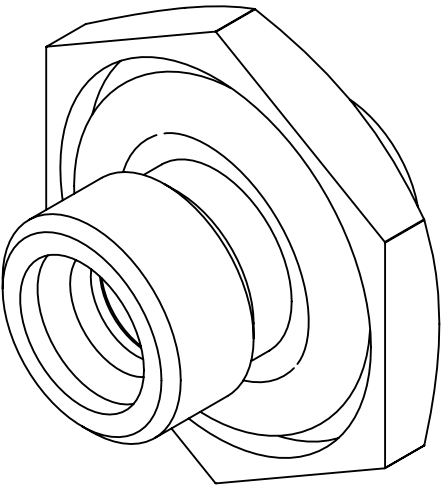


PRODUCT DATA DRAWING

REVISION HISTORY			
REV	DESCRIPTION	DATE	APPROVED
A	DCN 55884	12/24	SEE PDM



RECOMMENDED MOUNTING HOLE



MATERIAL:

- BODY:

GLASS:

PIN:

O-RING:
- STAINLESS STEEL PER AMS 5640, ALLOY UNS S30300, TYPE 1 OR ASTM A582, TYPE 303, CONDITION A.

CORNING 7070 OR EQUIVALENT.

KOVAR PER ASTM F15.

SILICONE RUBBER PER A-A-59588, CLASS 2B, GRADE 50, 60, OR 70.

FINISH:

- BODY

PIN :
- GOLD PER ASTM B488, TYPE II, CODE C, CLASS 1.27 OVER NICKEL PER AMS-QQ-N-290, CLASS 1, .00005" MIN.

PERFORMANCE:


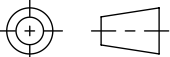
- IMPEDANCE:

FREQ. RANGE:

HERMETICITY:
- 50 OHMS

DC TO 40.0 GHz

1 X 10<sup>-8</sup> cc/SEC

MATERIAL:	SEE NOTES	DIMENSIONS ARE IN INCHES TOLERANCES: FRACTIONAL: $\pm 1/64$ ANGULAR: X° $\pm 1^{\circ}0'$ X°X' $\pm 15'$ DECIMAL: X $\pm .030$ .XX $\pm .010$ .XXX $\pm .005$ INTERPRET DIMENSIONS AND TOLERANCES PER ASME Y14.5M - 1994	UNLESS OTHERWISE SPECIFIED 1) ALL DIMENSIONS ARE IN INCHES (MILLIMETERS) 2) ALL DIMENSIONS ARE AFTER PLATING. 3) BREAK CORNERS & EDGES .005 R. MAX. 4) CHAM. 1ST & LAST THREADS. 5) SURFACE ROUGHNESS 63-MIL-STD-10. 6) DIA.'S ON COMMON CENTERS TO BE CONCENTRIC WITHIN T.I.R. 7) REMOVE ALL BURRS	 www.svmicrowave.com	
FINISH:	SEE NOTES			TITLE: STR. M SMPM FD TO M SMPM FD HERMETIC ADAPTER	
SURFACE AREA:	N/A				
PROPRIETARY THE INFORMATION CONTAINED IN THIS DRAWING IS THE SOLE PROPERTY OF SV MICROWAVE, INC. ANY REPRODUCTION IN PART OR AS A WHOLE WITHOUT THE WRITTEN PERMISSION OF SV MICROWAVE, INC IS PROHIBITED.		THIRD ANGLE PROJECTION	DRAWN: JPM 10/05/22	SIZE DWG. NO.	1132-6127
			CHECKED: SEE PDM	B	
			APPROVED: SEE PDM	SCALE: 12:1	SHEET 1 OF 1