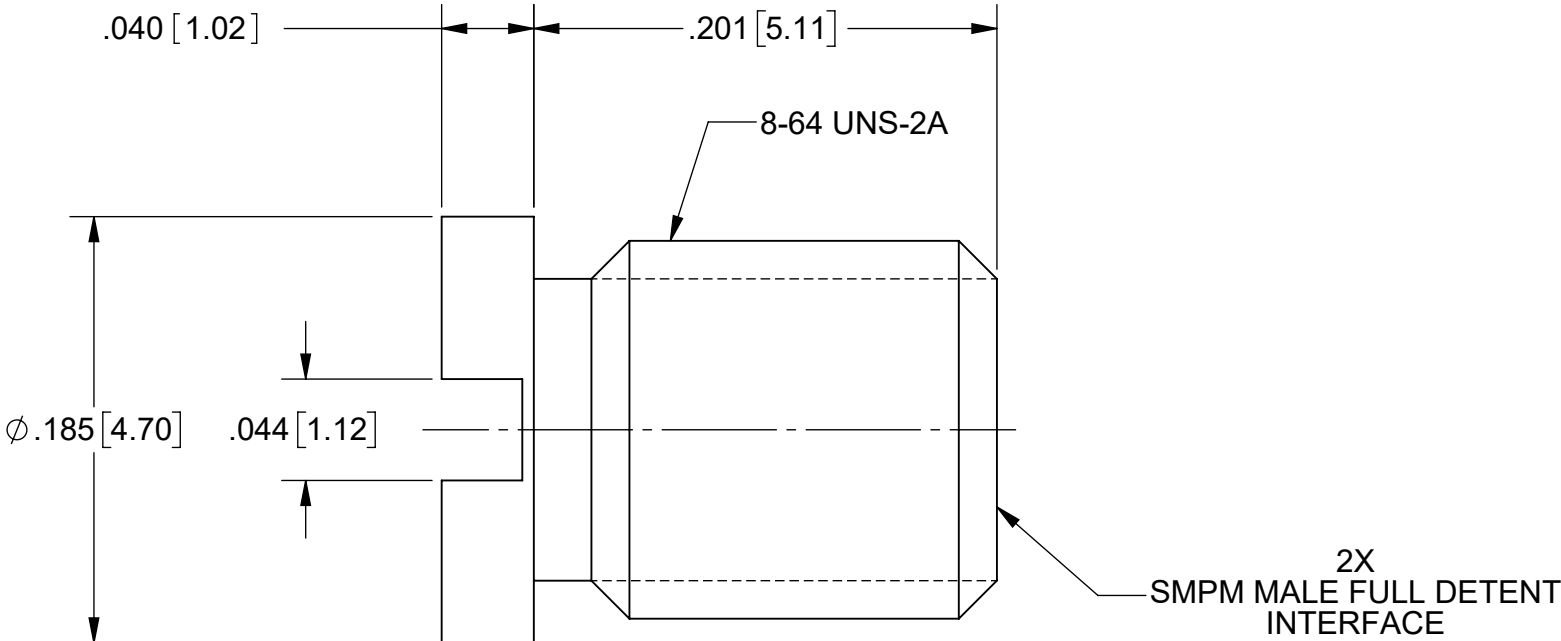
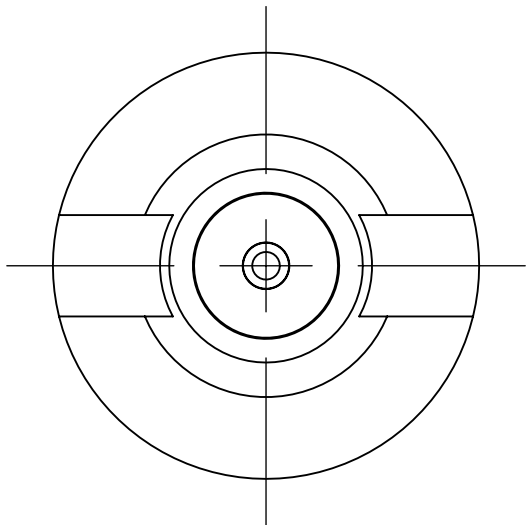
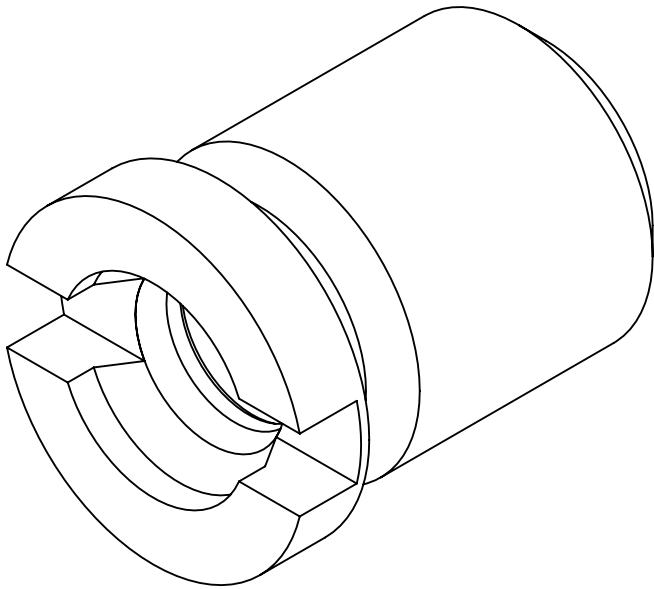


PRODUCT DATA DRAWING

REVISION HISTORY			
REV	DESCRIPTION	DATE	APPROVED
-	NRN 44865	05/20	SEE PDM
A	DCN 52177	02/23	



MATERIAL:


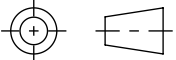
BODY & CONTACT: BERYLLIUM COPPER
INSULATOR: PTFE

FINISH:

BODY & CONTACT: GOLD OVER COPPER

PERFORMANCE:

IMPEDANCE: 50 OHMS
FREQUENCY RANGE: DC TO 40 GHz
MAGNETIC FIELD STRENGTH: <.1 mG

MATERIAL:	SEE NOTES	DIMENSIONS ARE IN INCHES TOLERANCES:	UNLESS OTHERWISE SPECIFIED	 www.svmicrowave.com	
FINISH:	SEE NOTES	FRACTIONAL: ±1/64 ANGULAR: X° ±1°0' X°X' ±15'	1) ALL DIMENSIONS ARE IN INCHES (MILLIMETERS) 2) ALL DIMENSIONS ARE AFTER PLATING. 3) BREAK CORNERS & EDGES .005 R. MAX. 4) CHAM. 1ST & LAST THREADS. 5) SURFACE ROUGHNESS 63-MIL-STD-10. 6) DIA.'S ON COMMON CENTERS TO BE CONCENTRIC WITHIN .005 T.I.R. 7) REMOVE ALL BURRS		
SURFACE AREA:	N/A	DECIMAL: .X ±.030 .XX ±.010 .XXX ±.005	INTERPRET DIMENSIONS AND TOLERANCES PER ASME Y14.5M - 1994	TITLE: SMPM FD MALE TO FD MALE (NON-MAGNETIC) THREAD-IN ADAPTER	
PROPRIETARY THE INFORMATION CONTAINED IN THIS DRAWING IS THE SOLE PROPERTY OF SV MICROWAVE, INC. ANY REPRODUCTION IN PART OR AS A WHOLE WITHOUT THE WRITTEN PERMISSION OF SV MICROWAVE, INC IS PROHIBITED.		THIRD ANGLE PROJECTION	DRAWN: SJ 05/27/20	SIZE B	DWG. NO. 1132-4108
			CHECKED: SEE PDM APPROVED: SEE PDM	SCALE: 12:1	SHEET 1 OF 1