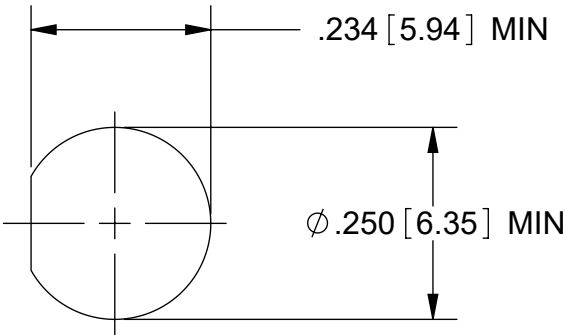
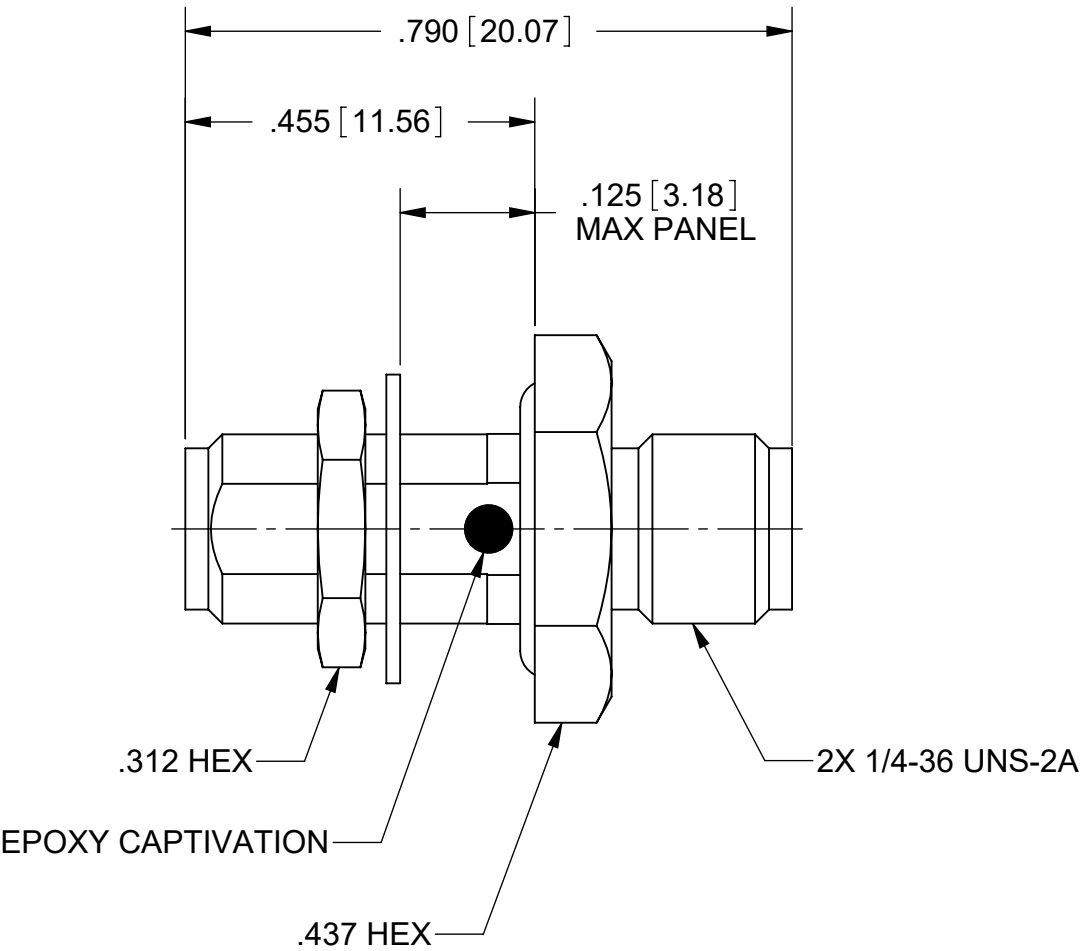
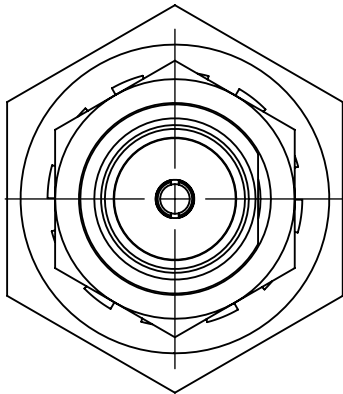


PRODUCT DATA DRAWING

REVISION HISTORY			
REV	DESCRIPTION	DATE	APPROVED
-	NRN 44867	05/20	SEE PDM
A	DCN 52177	02/23	



RECOMMENDED MOUNTING HOLE

MATERIAL:


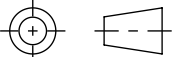
BODY, CONTACT & HEX NUT:	BERYLLIUM COPPER
INSULATOR:	PTFE
O-RING:	SILICONE RUBBER
LOCK WASHER:	PHOSPHOR BRONZE

FINISH:

BODY, CONTACT, LOCK WASHER & COUPLING NUT:	GOLD OVER COPPER
--	------------------

PERFORMANCE:

IMPEDANCE:	50 OHMS
FREQ. RANGE:	DC TO 18.0 GHz.
MAGNETIC FIELD STRENGTH:	<.1 mG

MATERIAL: SEE NOTES	DIMENSIONS ARE IN INCHES TOLERANCES: FRACTIONAL: ±1/64 ANGULAR: X° ±1°0' X°X' ±15' DECIMAL: .X ±.030 .XX ±.010 .XXX ±.005 INTERPRET DIMENSIONS AND TOLERANCES PER ASME Y14.5M - 1994	UNLESS OTHERWISE SPECIFIED 1) ALL DIMENSIONS ARE IN INCHES (MILLIMETERS) 2) ALL DIMENSIONS ARE AFTER PLATING. 3) BREAK CORNERS & EDGES .005 R. MAX. 4) CHAM. 1ST & LAST THREADS. 5) SURFACE ROUGHNESS 63+MIL-STD-10. 6) DIA.'S ON COMMON CENTERS TO BE CONCENTRIC WITHIN .005 T.I.R. 7) REMOVE ALL BURRS		
FINISH: SEE NOTES			TITLE: SMA JACK TO JACK (NON-MAGNETIC) BULKHEAD ADAPTER	
SURFACE AREA: N/A	THIRD ANGLE PROJECTION 	DRAWN: KRR 05/27/20 CHECKED: SEE PDM APPROVED: SEE PDM	SIZE B	DWG. NO. 1129-4004
THE INFORMATION CONTAINED IN THIS DRAWING IS THE SOLE PROPERTY OF SV MICROWAVE, INC. ANY REPRODUCTION IN PART OR AS A WHOLE WITHOUT THE WRITTEN PERMISSION OF SV MICROWAVE, INC IS PROHIBITED.			SCALE: 4:1	SHEET 1 OF 1