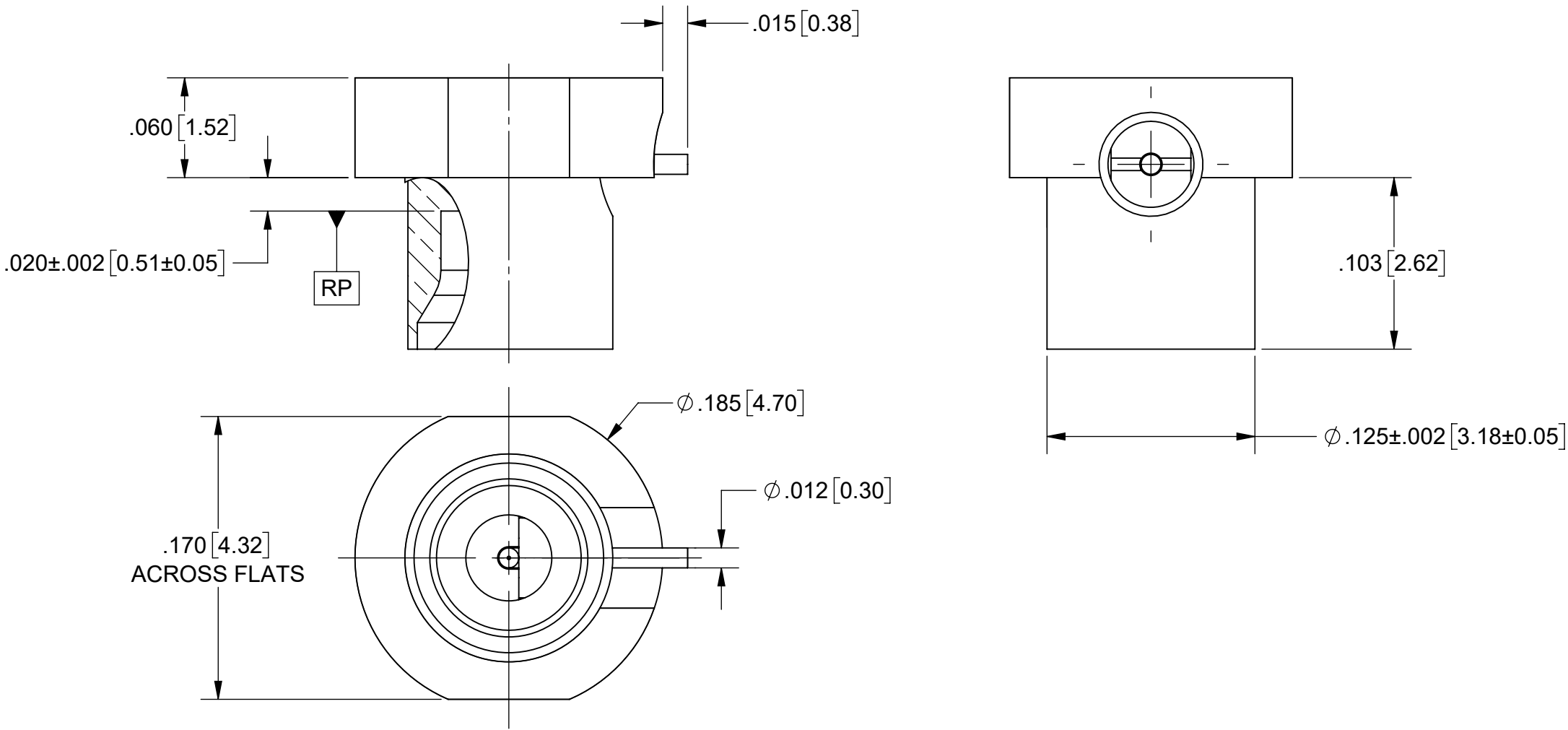


REVISION HISTORY			
REV	DESCRIPTION	DATE	APPROVED
-	NRN 49286	08/25	SEE PDM

PRODUCT DATA DRAWING



MATERIAL:

BODY, CAP,
& CONTACT:

BERYLLIUM COPPER PER ASTM B196,
ALLOY No. UNS C17300, TD04

INSULATORS:

POLYAMIDE-IMDE PER ASTM D5204 (TORLON)

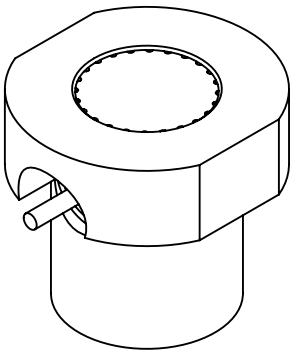
FINISH:

BODY, CAP,
& CONTACT:

GOLD PER ASTM B488, TYPE II,
CODE C, CLASS 1.27, OVER NICKEL
PER AMS-QQ-N-290, CLASS 1, .00005" MIN.

NOTE:


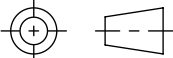
1.
- DESIGNED TO BE MOUNTED THROUGH A PCB, PROVIDING A
DIRECT SIGNAL PATH TO THE OPPOSITE SIDE OF THE BOARD.
2.
- FOR A FOOTPRINT RECOMMENDATION SPECIFIC TO YOUR PCB,
PLEASE CONTACT US AT applications@svmicro.com.



PERFORMANCE:

IMPEDANCE:
FREQ. RANGE:

50 OHMS.
DC TO 40 GHz.

MATERIAL:	SEE NOTES	DIMENSIONS ARE IN INCHES TOLERANCES: FRACTIONAL: $\pm 1/64$ ANGULAR: X° $\pm 1^{\circ}0'$ X°X' $\pm 15'$ DECIMAL: .X $\pm .030$.XX $\pm .010$.XXX $\pm .005$ INTERPRET DIMENSIONS AND TOLERANCES PER ASME Y14.5M - 1994	UNLESS OTHERWISE SPECIFIED 1) ALL DIMENSIONS ARE IN INCHES (MILLIMETERS) 2) ALL DIMENSIONS ARE AFTER PLATING. 3) BREAK CORNERS & EDGES .005 R. MAX. 4) CHAM. 1ST & LAST THREADS. 5) SURFACE ROUGHNESS 63-MIL-STD-10. 6) DIA.'S ON COMMON CENTERS TO BE CONCENTRIC WITHIN .005 T.I.R. 7) REMOVE ALL BURRS	 www.svmicrowave.com	
FINISH:	SEE NOTES			TITLE: SMPM SB MALE REVERSE PCB MOUNT	
SURFACE AREA:	N/A				
PROPRIETARY THE INFORMATION CONTAINED IN THIS DRAWING IS THE SOLE PROPERTY OF SV MICROWAVE, INC. ANY REPRODUCTION IN PART OR AS A WHOLE WITHOUT THE WRITTEN PERMISSION OF SV MICROWAVE, INC IS PROHIBITED.		THIRD ANGLE PROJECTION	DRAWN:	LDJ 08/15/25	SIZE DWG. NO. B 3211-60485
			CHECKED:	SEE PDM	
			APPROVED:	SEE PDM	SCALE: 8:1 SHEET 1 OF 1