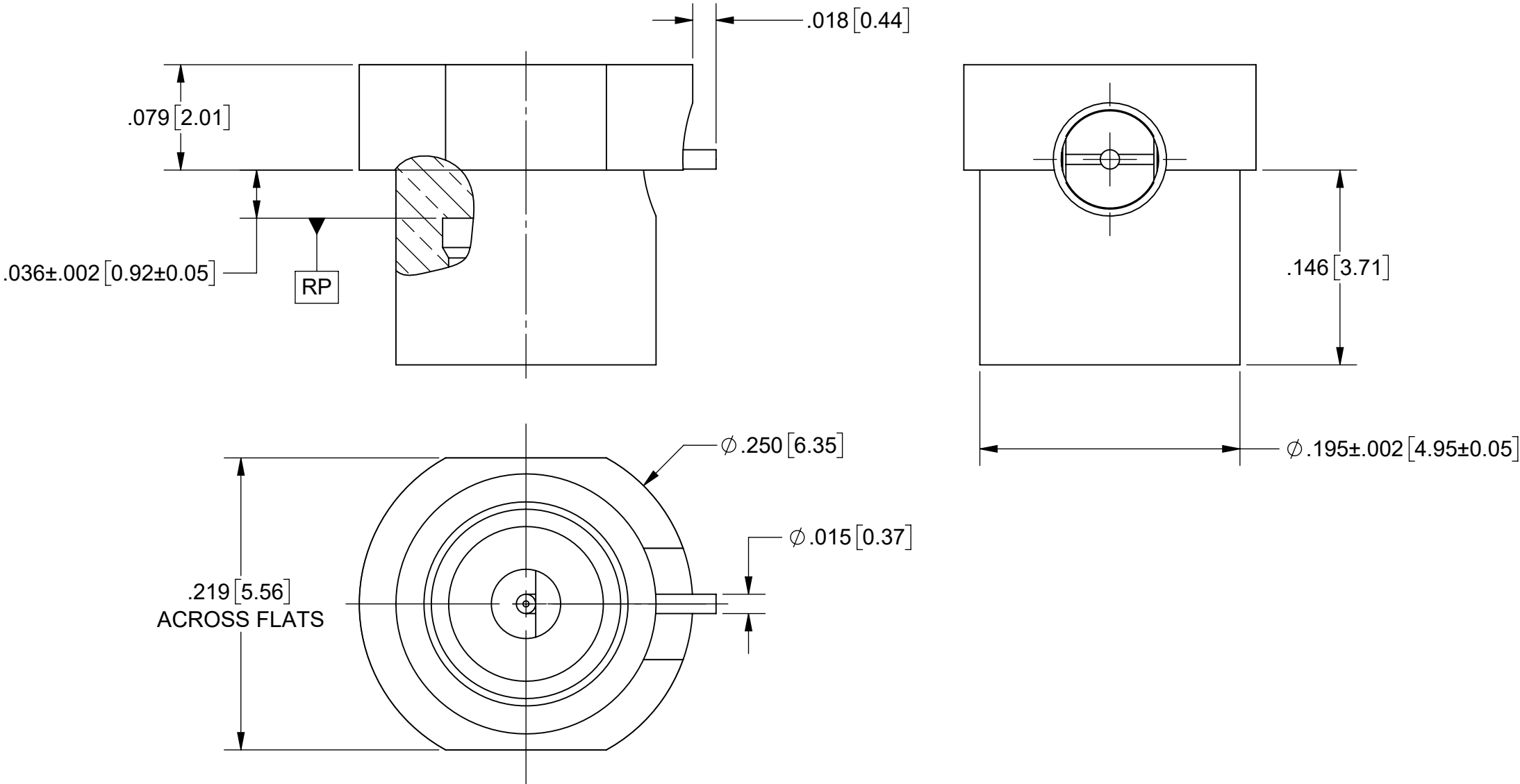


PRODUCT DATA DRAWING

REVISION HISTORY			
REV	DESCRIPTION	DATE	APPROVED
-	NRN 49286	08/25	SEE PDM



MATERIAL:

BODY, CAP,
& CONTACT:

BERYLLIUM COPPER PER ASTM B196,
ALLOY No. UNS C17300, TD04

INSULATORS:

POLYAMIDE-IMDE PER ASTM D5204 (TORLON)

FINISH:

BODY, CAP,
& CONTACT:

GOLD PER ASTM B488, TYPE II,
CODE C, CLASS 1.27, OVER NICKEL
PER AMS-QQ-N-290, CLASS 1, .00005" MIN.

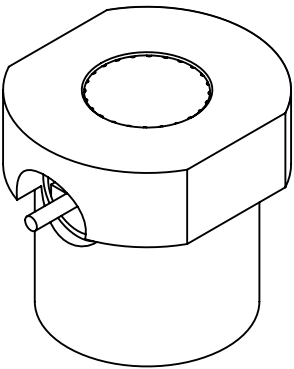
PERFORMANCE:


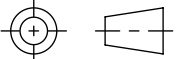
IMPEDANCE:
FREQ. RANGE:

50 OHMS.
DC TO 26.5 GHz

NOTE:

- DESIGNED TO BE MOUNTED THROUGH A PCB, PROVIDING A DIRECT SIGNAL PATH TO THE OPPOSITE SIDE OF THE BOARD.
- FOR A FOOTPRINT RECOMMENDATION SPECIFIC TO YOUR PCB, PLEASE CONTACT US AT applications@svmicro.com.



MATERIAL:	SEE NOTES	DIMENSIONS ARE IN INCHES TOLERANCES:	UNLESS OTHERWISE SPECIFIED		 www.svmicrowave.com
FINISH:	SEE NOTES	FRACTIONAL: $\pm 1/64$ ANGULAR: X° $\pm 1^{\circ}0'$ X°X' $\pm 15'$			
SURFACE AREA:	N/A	DECIMAL: .X $\pm .030$.XX $\pm .010$.XXX $\pm .005$	INTERPRET DIMENSIONS AND TOLERANCES PER ASME Y14.5M - 1994		TITLE: SMP STR. M (FD) REVERSE MOUNT PCB CONNECTOR
PROPRIETARY		THIRD ANGLE PROJECTION		DRAWN: LDJ 08/15/25	
THE INFORMATION CONTAINED IN THIS DRAWING IS THE SOLE PROPERTY OF SV MICROWAVE, INC. ANY REPRODUCTION IN PART OR AS A WHOLE WITHOUT THE WRITTEN PERMISSION OF SV MICROWAVE, INC IS PROHIBITED.				CHECKED: SEE PDM	SIZE DWG. NO. B 1211-66449
				APPROVED: SEE PDM	SCALE: 7:1 SHEET 1 OF 1