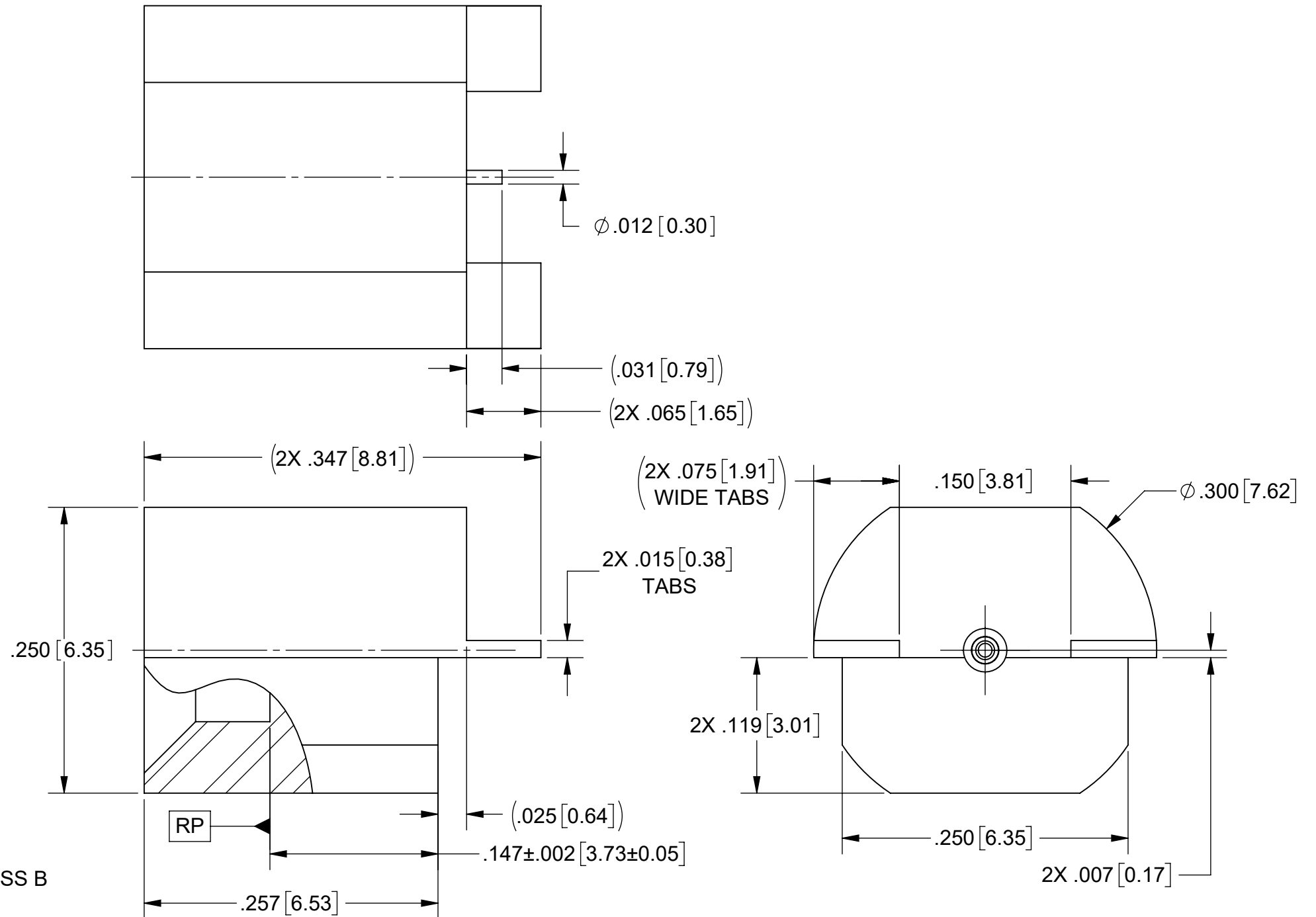
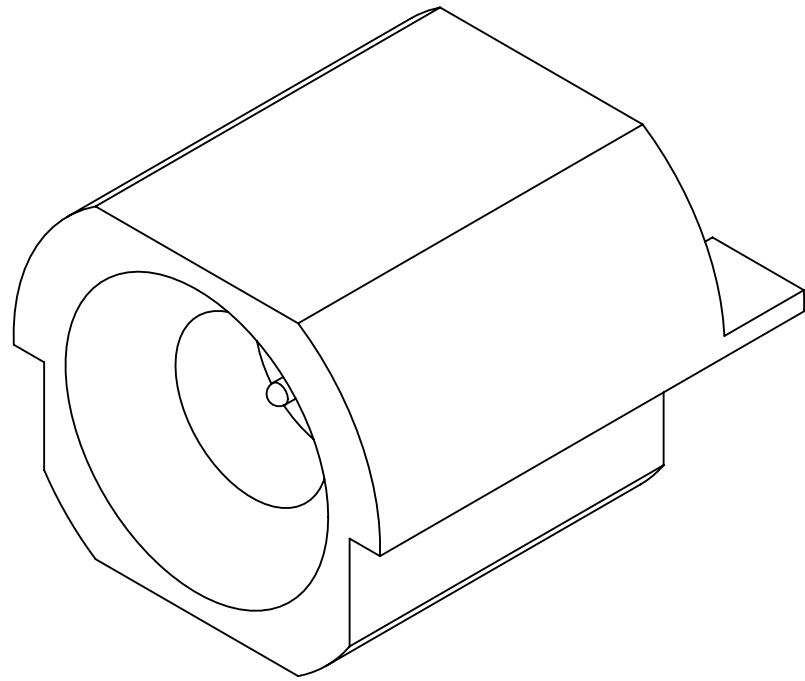




REVISION HISTORY			
REV	DESCRIPTION	DATE	APPROVED
-	DCN 56982	05/25	SEE PDM



IMPEDANCE: 50 OHMS
FREQ. RANGE: DC TO 40 GHz

1. THIS PART HAS BEEN OPTIMIZED TO FEATURE AN EXTENDED FLANGE AT THE PCB TRANSITION TO MAINTAIN ELECTRICAL CONTACT IN THE EVENT OF COPPER PULL BACK.

MATERIAL:	SEE NOTES		DIMENSIONS ARE IN INCHES TOLERANCES:		UNLESS OTHERWISE SPECIFIED		 www.svmicrowave.com	
FINISH:	SEE NOTES		FRACTIONAL: $\pm 1/64$ ANGULAR: $X^\circ \pm 1^\circ 0'$ $X^\circ X' \pm 15'$		1) ALL DIMENSIONS ARE IN INCHES (MILLIMETERS) 2) ALL DIMENSIONS ARE AFTER PLATING. 3) BREAK CORNERS & EDGES .005 R. MAX. 4) CHAM. 1ST & LAST THREADS. 5) SURFACE ROUGHNESS 63-MIL-STD-10. 6) DIA. 'S ON COMMON CENTERS TO BE CONCENTRIC WITHIN .005 T.I.R. 7) REMOVE ALL BURRS		TITLE:	
SURFACE AREA:	N/A		DECIMAL: $.X \pm .030$ $.XX \pm .010$ $.XXX \pm .005$				SMP MALE (CM) EDGE LAUNCH PLUS	
PROPRIETARY THE INFORMATION CONTAINED IN THIS DRAWING IS THE SOLE PROPERTY OF SV MICROWAVE, INC. ANY REPRODUCTION IN PART OR AS A WHOLE WITHOUT THE WRITTEN PERMISSION OF SV MICROWAVE, INC IS PROHIBITED.			INTERPRET DIMENSIONS AND TOLERANCES PER ASME Y14.5M - 1994		THIRD ANGLE PROJECTION 		DRAWN: ENB 05/01/25	
					CHECKED: SEE PDM		SIZE B DWG. NO. 1211-66459	
					APPROVED: SEE PDM		SCALE: 9:1 SHEET 1 OF 1	