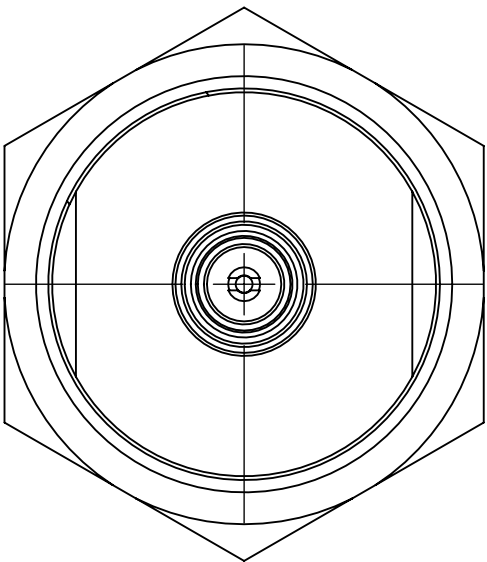
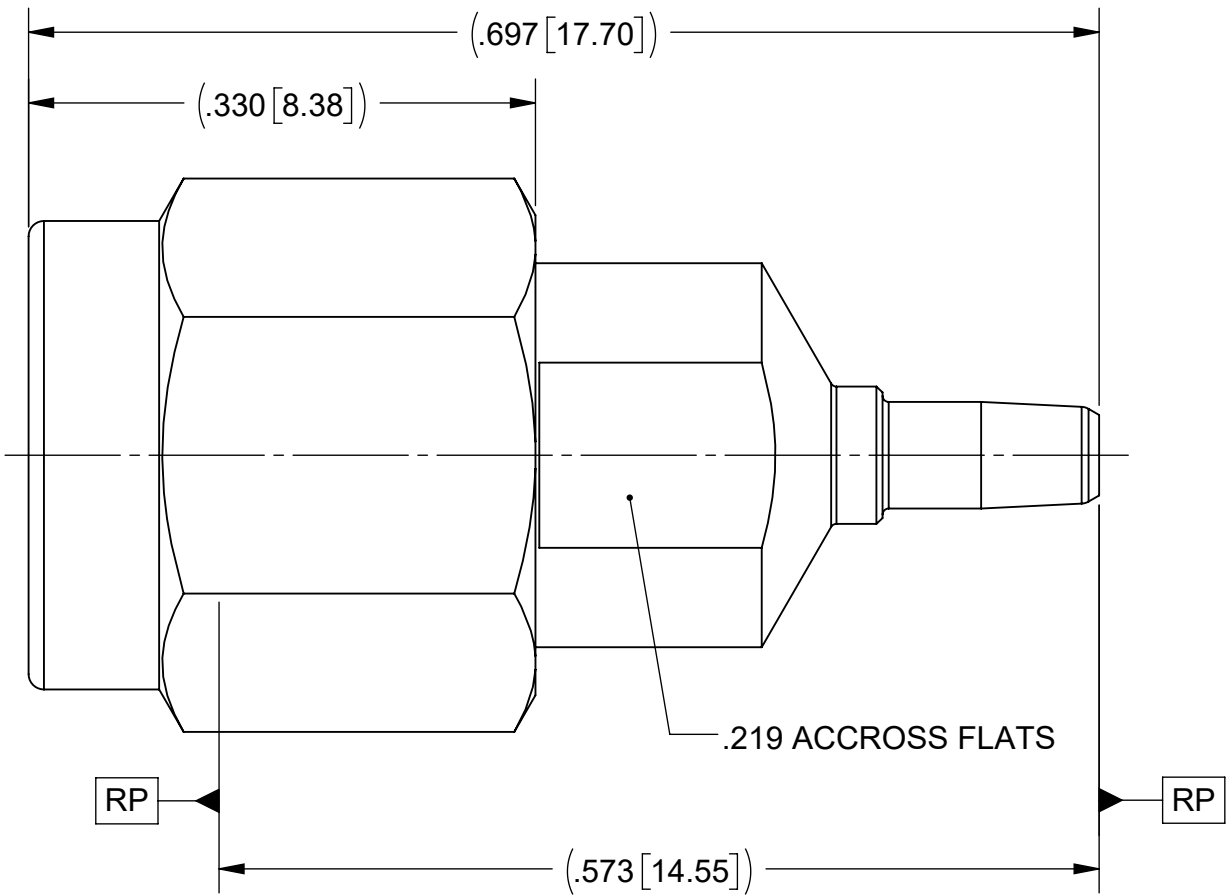
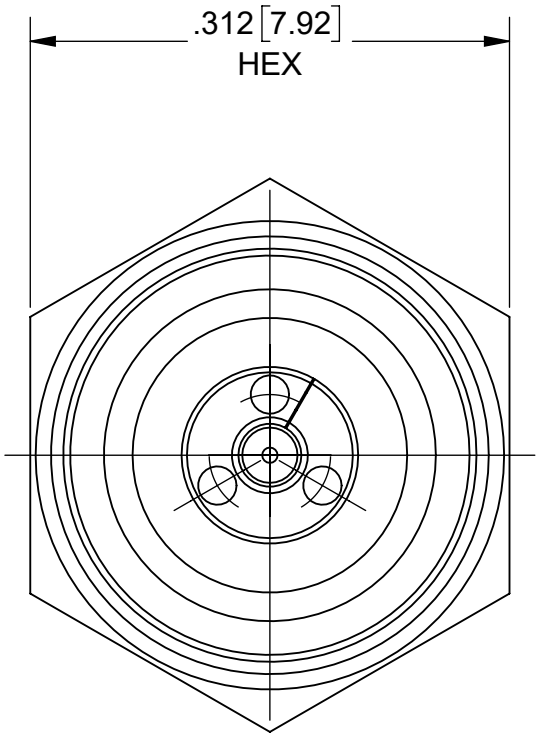


PRODUCT DATA DRAWING

REVISION HISTORY			
REV	DESCRIPTION	DATE	APPROVED
-	DCN 56983	05/25	SEE PDM



MATERIAL:

BODY, INSERT & COUPLING NUT:	STAINLESS STEEL PER AMS 5640, ALLOY UNS S30300, TYPE 1 OR ASTM A582 TYPE 303, CONDITION A.
LOCK RING & CONTACT:	BERYLLIUM COPPER PER ASTM B196, ALLOY No. UNSC17300, TD04.
INSULATOR:	PTFE PER ASTM D1710, TYPE I, GRADE 1, CLASS B.
BEAD:	PEI (ULTEM 1000) PER ASTM D5205.
GASKET:	SILICONE RUBBER PER A-A-59588, CLASS 2B, GRADE 60 OR 70.

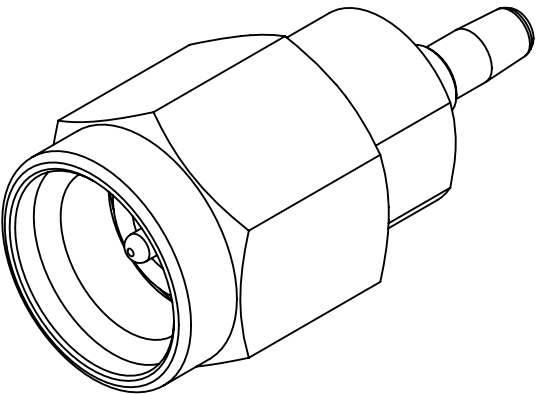
FINISH:


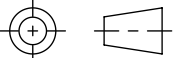
BODY, INSERT & COUPLING NUT:	PASSIVATED PER AMS 2700.
------------------------------	--------------------------

CONTACT:	GOLD PER ASTM B 488, TYPE II, CODE C, CLASS 1.27 OVER NICKEL PER AMS-QQ-N-290, CLASS 1, .00005" MIN.
----------	--

PERFORMANCE:

IMPEDANCE:	50 OHMS
FREQ. RANGE:	DC TO 40.0 GHz.



MATERIAL: SEE NOTES	DIMENSIONS ARE IN INCHES TOLERANCES: FRACTIONAL: ±1/64 ANGULAR: X° ±1°0' X°X' ±15' DECIMAL: .X ±.030 .XX ±.010 .XXX ±.005 INTERPRET DIMENSIONS AND TOLERANCES PER ASME Y14.5M - 1994	UNLESS OTHERWISE SPECIFIED 1) ALL DIMENSIONS ARE IN INCHES (MILLIMETERS) 2) ALL DIMENSIONS ARE AFTER PLATING. 3) BREAK CORNERS & EDGES .005 R. MAX. 4) CHAM. 1ST & LAST THREADS. 5) SURFACE ROUGHNESS 63-MIL-STD-10. 6) DIA.'S ON COMMON CENTERS TO BE CONCENTRIC WITHIN .005 T.I.R. 7) REMOVE ALL BURRS	 www.svmicrowave.com	
FINISH: SEE NOTES			TITLE: NanoRF PIN TO 2.92mm MSTR. ADAPTER	
SURFACE AREA: N/A	THIRD ANGLE PROJECTION 	DRAWN: VNR 05/06/25 CHECKED: SEE PDM APPROVED: SEE PDM	SIZE B	DWG. NO. 1183-6009
THE INFORMATION CONTAINED IN THIS DRAWING IS THE SOLE PROPERTY OF SV MICROWAVE, INC. ANY REPRODUCTION IN PART OR AS A WHOLE WITHOUT THE WRITTEN PERMISSION OF SV MICROWAVE, INC IS PROHIBITED.			SCALE: 8:1	SHEET 1 OF 1