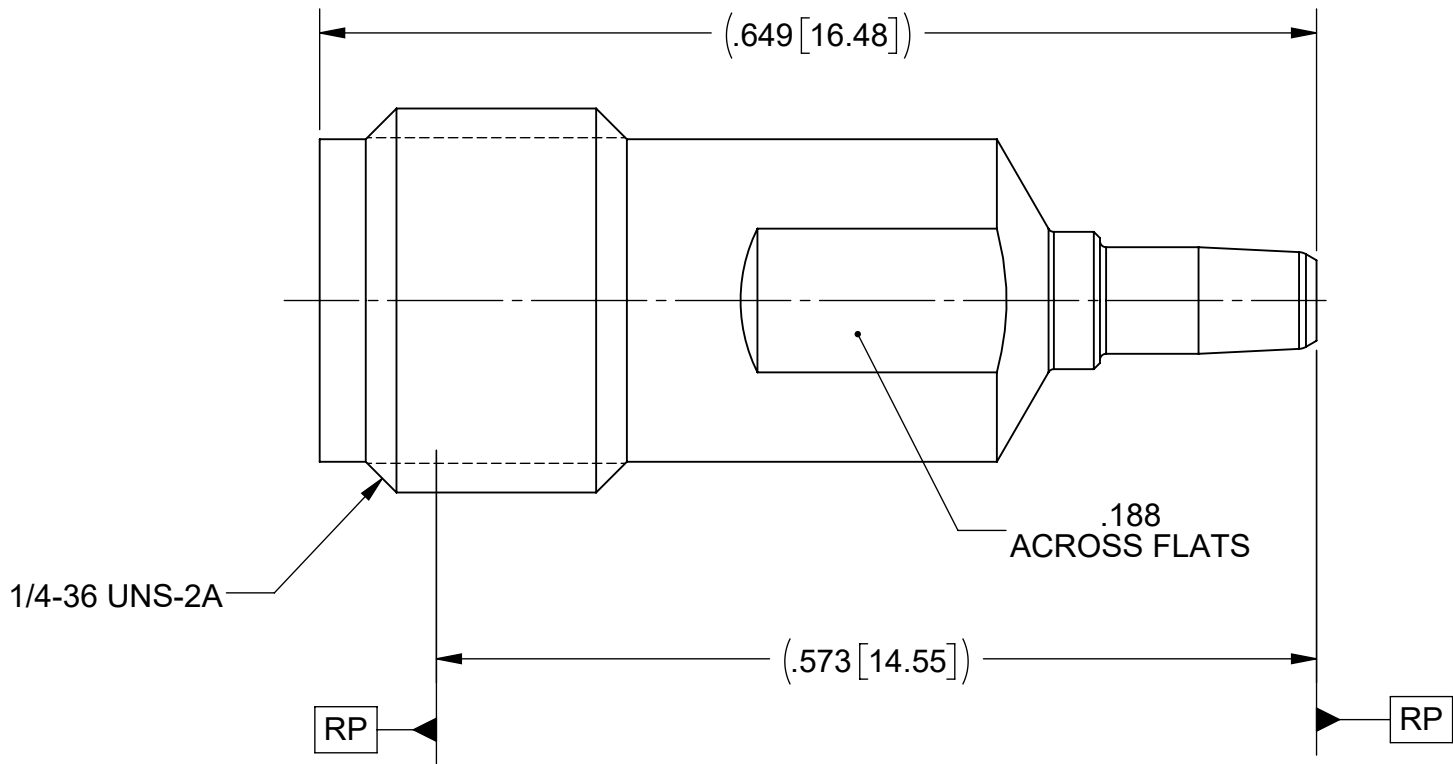
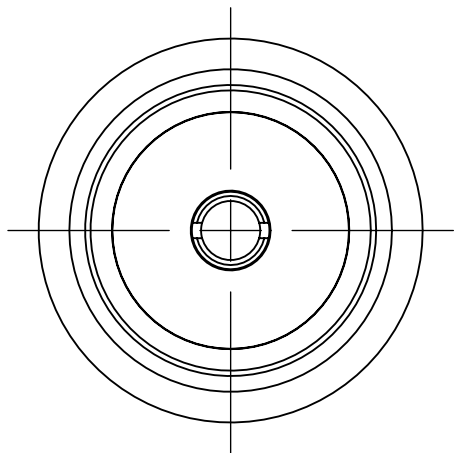
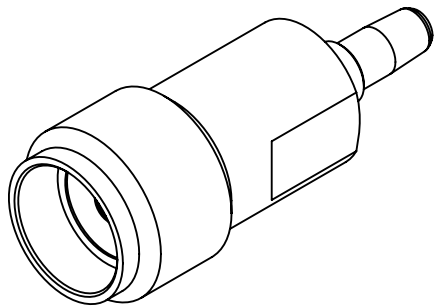


PRODUCT DATA DRAWING

REVISION HISTORY			
REV	DESCRIPTION	DATE	APPROVED
-	NRN 49144	05/25	SEE PDM



MATERIAL:

BODY: STAINLESS STEEL PER AMS 5640, ALLOY UNS S30300, TYPE 1 OR ASTM A582 TYPE 303, CONDITION A.

CONTACT: BERYLLIUM COPPER PER ASTM B196, ALLOY No. UNS C17300, TD04.

INSULATORS: PTFE PER ASTM D1710, TYPE I, GRADE 1, CLASS B.


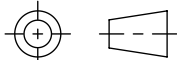
FINISH:

BODY: PASSIVATED PER AMS 2700

CONTACT: GOLD PER ASTM B488, TYPE II, CODE C, CLASS 1.27, OVER NICKEL PER AMS-QQ-N-290, CLASS 1, .00005" MIN.

PERFORMANCE:

IMPEDANCE: 50 OHMS  
FREQ. RANGE: DC TO 18.0 GHz.

MATERIAL:	SEE NOTES	DIMENSIONS ARE IN INCHES TOLERANCES:  FRACTIONAL: ±1/64    ANGULAR: X° ±1°0'    X°X' ±15'  DECIMAL: .X    ±.030 .XX    ±.010 .XXX ±.005  INTERPRET DIMENSIONS AND TOLERANCES PER ASME Y14.5M - 1994		UNLESS OTHERWISE SPECIFIED  1) ALL DIMENSIONS ARE IN INCHES (MILLIMETERS) 2) ALL DIMENSIONS ARE AFTER PLATING. 3) BREAK CORNERS & EDGES .005 R. MAX. 4) CHAM. 1ST & LAST THREADS. 5) SURFACE ROUGHNESS 63-MIL-STD-10. 6) DIA. 'S ON COMMON CENTERS TO BE CONCENTRIC WITHIN .005 T.I.R. 7) REMOVE ALL BURRS		<div> www.svmicrowave.com</div>	
FINISH:	SEE NOTES						
SURFACE AREA:	N/A	THIRD ANGLE PROJECTION <div></div>		DRAWN: KRR 05/06/25		TITLE:  NanoRF PIN TO SMA FEMALE STR. ADAPTER	
THE INFORMATION CONTAINED IN THIS DRAWING IS THE SOLE PROPERTY OF SV MICROWAVE, INC. ANY REPRODUCTION IN PART OR AS A WHOLE WITHOUT THE WRITTEN PERMISSION OF SV MICROWAVE, INC IS PROHIBITED.							
		CHECKED: SEE PDM		SIZE B	DWG. NO. 1183-6005		
		APPROVED: SEE PDM		SCALE: 8:1		SHEET 1 OF 1	